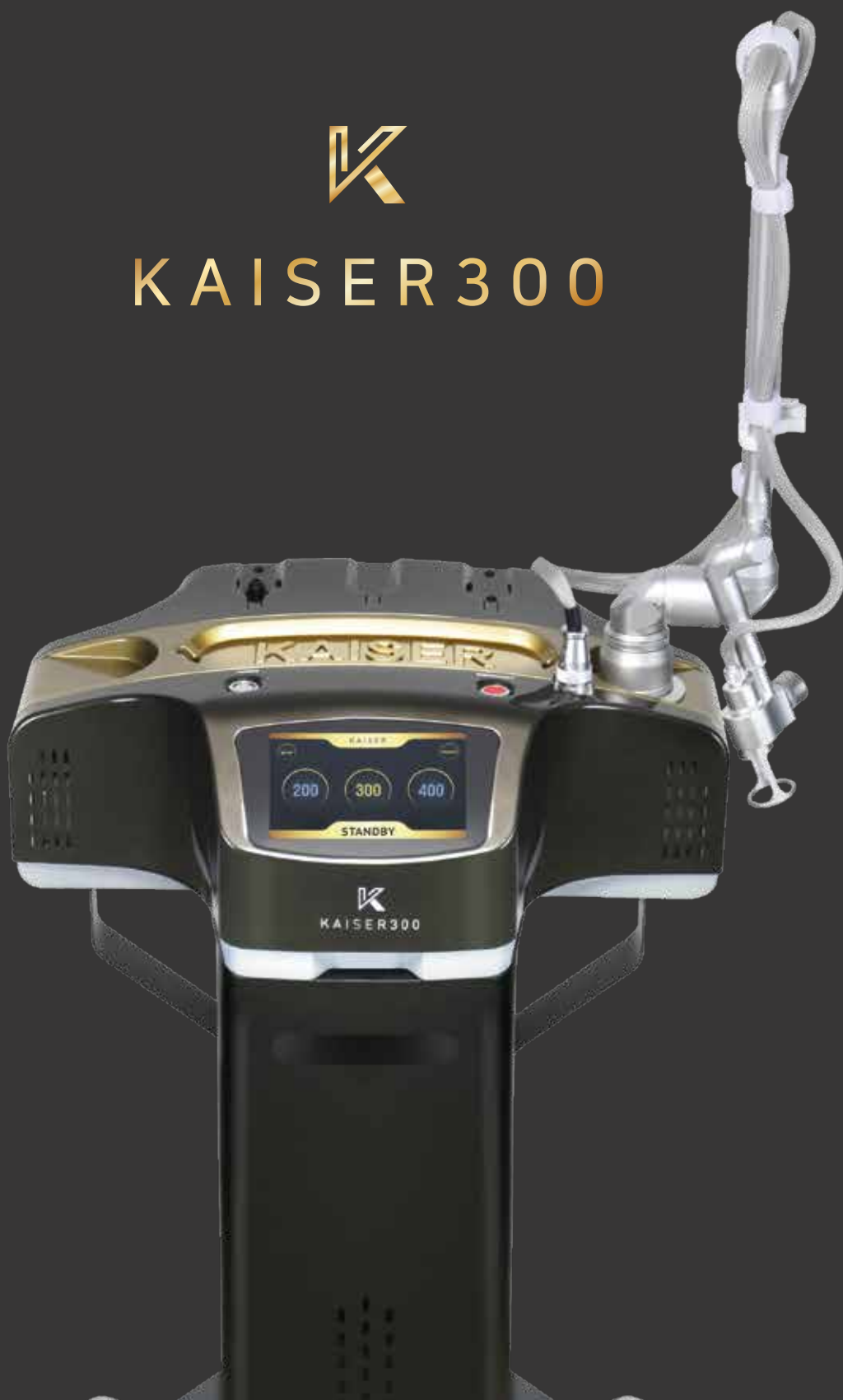




KAISER300



Premium Rejuvenation device

KAISER 300

Based on CO₂ Fractional laser, KAISER 300 is a skin rejuvenation laser device with the ability in creating Micro Holes up to 300 μ m in depth on the surface. KAISER 300 is developed for dermatologists and physicians who are looking for the most advanced laser to minimize side effects by reducing thermal damage to surrounding tissues and maximize effects.

- ✓ Smart DDS & Regeneration Function
- ✓ Less pain, Minimal side effects
- ✓ Maximal effects, Constant treatment results
- ✓ Minimal skin irritation, Short recovery period
- ✓ Easy operation, Quick treatment

Skin
rejuvenation

Fine lines
improvement

Pore size
reduction

Elasticity
enhancement

Innovative
DDS System



KAISER 300

- 3 key elements of skin rejuvenation

KAISER 300 performs amazing skin rejuvenation effects by providing triple stimulations to skin.

Mechanical Stimulation

KAISER 300 mechanically stimulates the skin by creating Micro Holes to activate fibroblasts.

Thermal Stimulation

KAISER 300 laser beams minimize the heat damage to surrounding tissues and deliver necessary thermal energy to the target areas.

Biochemical Stimulation

Micro Holes with a depth of $300\mu\text{m}$, created by KAISER 300 can be used as channels for delivering activate ingredients to nourish and regenerate the skin.



Promoting Collagen Production & Skin Rejuvenation



KAISER 300-SMART DDS (Drug Delivery System)

DDS(Drug Delivery System) is a System that deliver Active ingredients into the body to exert an optical effect using various physicochemical techniques.

▪ Basic DDS ▪

MTS
(Microneedle Therapy System)



- Manual operation
- Unstable result
- Hygien issues
- Easy skin infections

Mesotherapy



- Manual operation
- Unstable result
- Severe pain
- Long recovery period

CO₂ Fractional Laser



- Not suitable for skin rejuvenation treatment due to deep Treatment depth
- Long recovery period due to heat damage

KAISER 300

DDS(Drug Delivery System) is a System that deliver Active ingredients into the body to exert an optical effect using various physicochemical techniques.

- Accuurate targeting, Constant results
- Minimize pain
- Short Recovery period
- Anyone can treat easily



KAISER 300

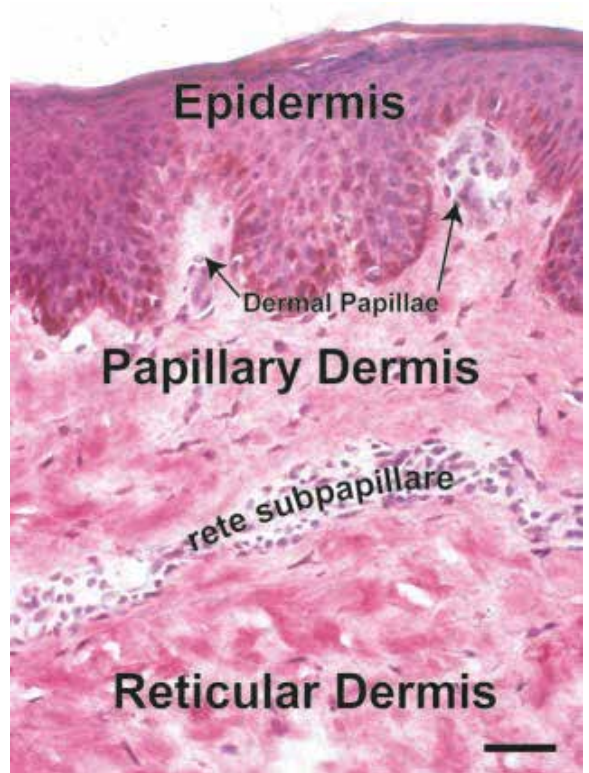
- The meaning of 300 μ m

Fibroblasts are located in papillary dermis (300 μ m) and reticular dermis. Its main duty is to create ECM Proteins (collagen, elastin...)

Papillary dermis fibroblasts(PF) produce collagen and elastin, which are necessary for skin beauty, whitening, elasticity and fine lines improvement.

Reticular dermal fibroblasts(RF) produce collagen for wound healing and skin protection purpose rather than skin beauty care.

Conclusion: in order to promote skin beauty function, the Papillary dermis fibroblast(PF) must be activated.



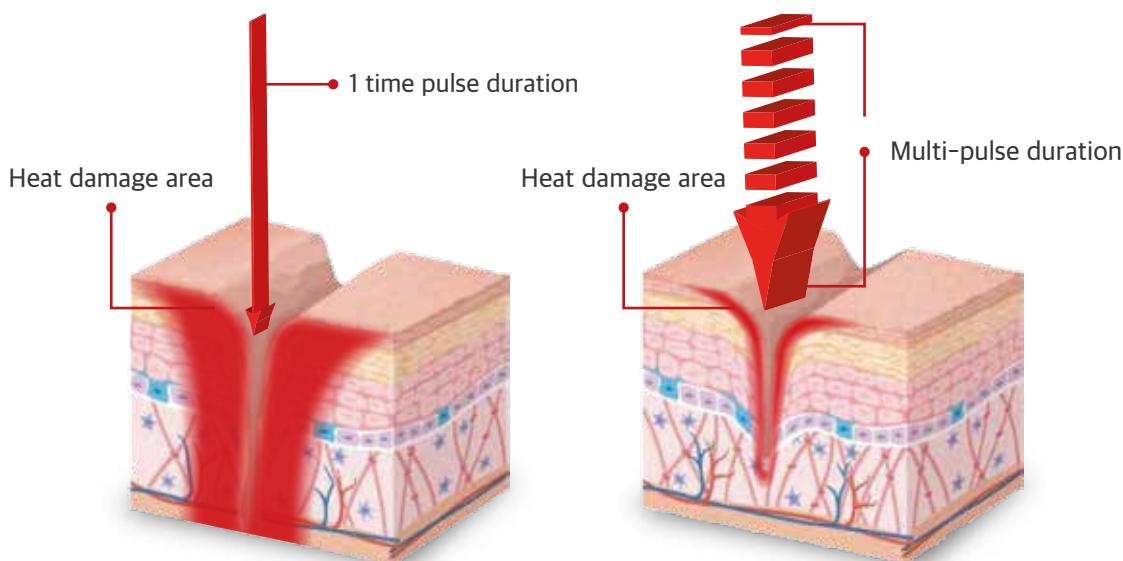
[출처] J. Michael Sorrell and Arnold I. Caplan(2004);
Fibroblast heterogeneity: more than skin deep;
Journal of Cell Science 117, 667-675

**KAISER 300 targets the upper dermis (300 μ m Papillary dermis)
compared to general ablative laser, so it can most effectively
rejuvenate the skin and allow daily life immediately after the procedure.**

Kaiser 300

upgraded parameter compared to CO₂ Fractional laser

General CO₂ Fractional laser has a long duration time and penetrates to the deep dermal layer of 1000~2000 μ m, but the KAISER300 is designed to reach the papillary dermis layer(300 μ m) by shooting a short beam several times with strong Power Peak.



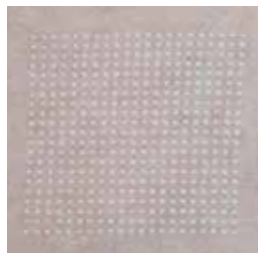
Peak power \uparrow Duration time \downarrow

[General CO₂ Fractional laser] Optimizaiton -----> [KAISER 300]

Depth	1000~2000 μ m	300 μ m
Side Effects	HUGE	SMALL
Down Time	LONG	SHORT
Pain	SERIOUS PAIN	ALMOST NO PAIN

-> Rejuvenation

■ Skin condition after treatment

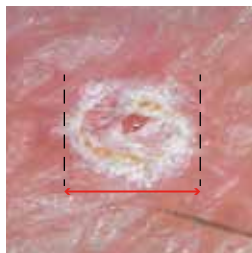


[CO₂ Fractional laser]



[KAISER 300]

■ Microscope observation after treatment



[CO₂ Fractional laser]



[KAISER 300]

■ After 3 days treatment



[CO₂ Fractional laser]

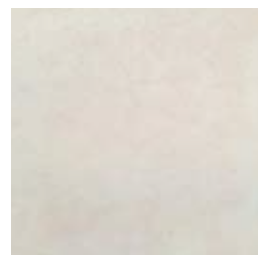


[KAISER 300]

■ After 7 days treatment



[CO₂ Fractional laser]



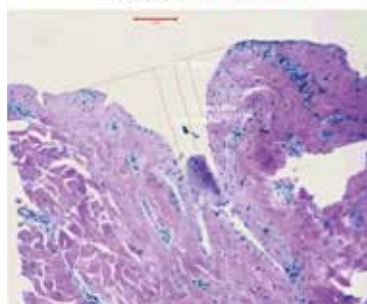
[KAISER 300]

KAISER 300

- Skin tissue condition checking

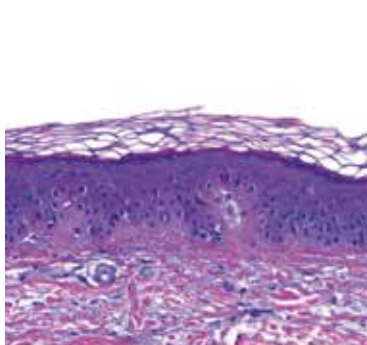
PIG SKIN

300 4-1, 240-301 um



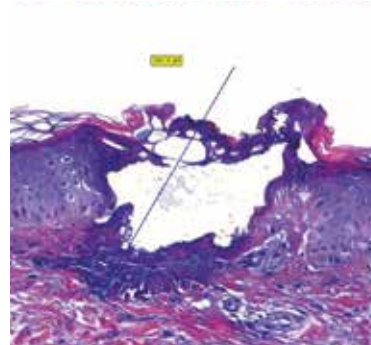
[출처] 영남대학교

CONTROL



[출처] (주)위즈메디 기업부설연구소

KAISER 300





KAISER300

WIZMEDI CO.,LTD.

#216, B/D No.G12, 280, Daehak-ro, Gyeongsan-si, Gyeongsangbuk-do, 38541, Korea

www.wizmedi.kr